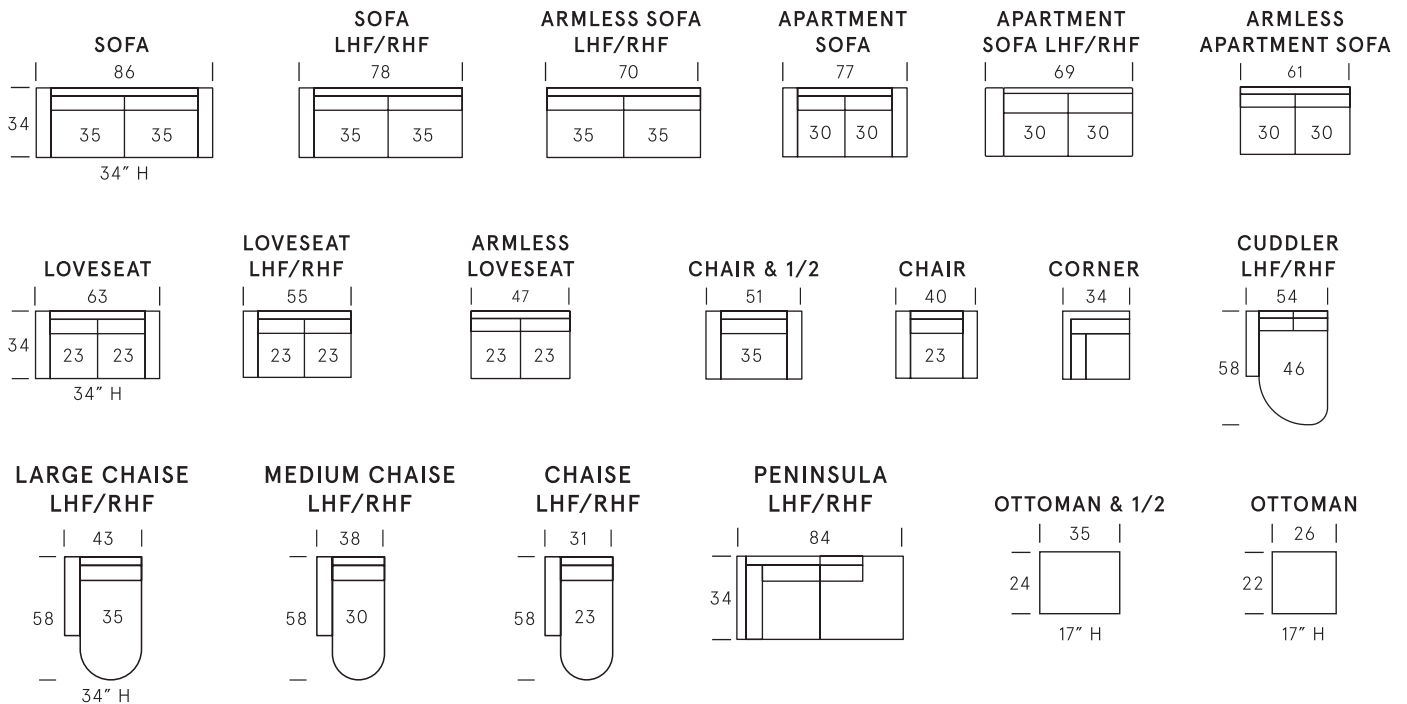




Kara Collection



SEAT DEPTH: 20"

SEAT HEIGHT: 18"

ARM HEIGHT: 24"

Standard Features

Kiln-dried hardwood frame. Sinuous spring system. Eco-friendly construction. 2.2 gel infused, high resiliency foam core seat cushions wrapped in soft foam. Fibre filled back cushions. Loose seats and loose backs. Available in fabric and leather. Bench-made in Canada.

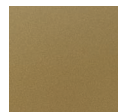
Metal Finishes



Black



Chrome



Gold

As an inherent quality of a hand-crafted product, all dimensions are approximate.